



聯傑國際股份有限公司(DAVICOM Semiconductor, Inc.)

# DAVICOM DM9000B Performance Report

## for SIGMA DESIGNS EM8511 Platform

- Test Environment

Device 1. :

Main-chip : EM8511 ( 200 MHz)

LAN chip : DM9000B EP

O.S. : 2.4.17-uc0 (uClinux)

IP : 192.168.11.33

Device 2. PC

CPU : Celeron 500 MHz

RAM : 128MB

LAN chip : DAVICOM DM9102D

O.S. : Linux (kernel 2.6.9)

IP : 192.168.11.3

- TCP Packets Performance

When we want to measure TX performance, device1 acts client and device2 acts server.

When we want to measure RX performance, device2 acts client and device1 acts server.

Table 1 shows TX performance

Server-PC : # iperf - s - w 65k

Client-EM8511 : # iperf\_u - c 192.168.11.3 - w 65k - i 1 - t 30

Table 2 shows RX performance

Server-EM8511 : # iperf - s - w 65k

Client-PC : # iperf\_u - c 192.168.11.33 - w 65k - i 1 - t 30



聯傑國際股份有限公司(DAVICOM Semiconductor, Inc.)

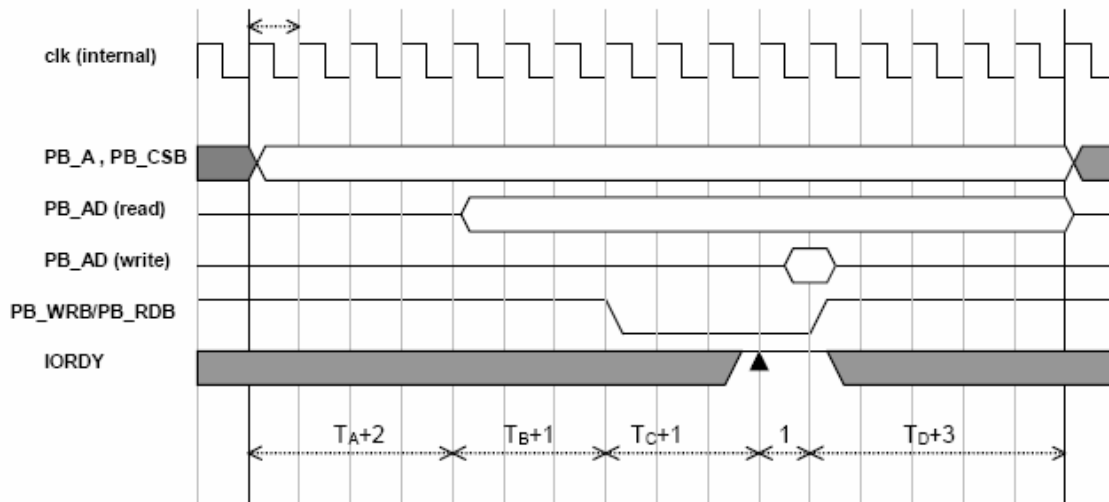
- **DM9000B** (version: 0720S D322W.93)

**\*\*Add Dumping resistance (33 Ohm)**

(Unit: Mbits/sec)

Data Bus Current Driving/Sinking Capability	Tx	Rx
2mA	X	X
4mA	X	X
6mA	24.3	44.8
	24.5	44.9
8mA	24.6	44.5
	24.8	44.4

PS. About Sigma Design EM8511 PB Timing:



Timing :  $T_a=0$ ,  $T_b=0$ ,  $T_c=1$ ,  $T_d=0$